

IBA CODE: MN049

IBA NAME: IKH GAZRIIN CHULUU

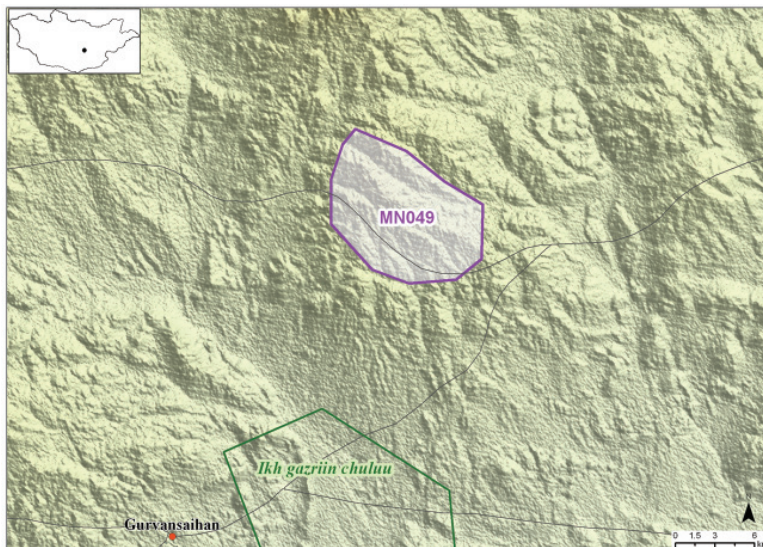
Aimag(s): DUNDGOBI **Criteria:** A1 **Area:** 9,300 ha
Coordinates: 45°45'N 107°15'E **Altitude:** 1,706 m

Protection status

Unprotected

Site description

The site comprises an area of rocky mountains, semi-desert and dry riverbeds with elm trees. The site is characterised by extensive granite rock formations, surrounded by steppe habitat. The site provides good stopover habitat for many nesting and migrating raptors and other birds. The main land uses are livestock husbandry and tourism. Livestock numbers around the site are increasing rapidly, and a tourist camp is being constructed.



Importance for birds

Globally Threatened species found at the site include Saker Falcon *Falco cherrug* (EN) and Lesser Kestrel *F. naumanni* (VU). Cinereous Vulture *Aegypius monachus* (NT) also occurs.

Importance for other fauna and flora

Globally and nationally rare and threatened wildlife species found at the site include Siberian Ibex *Capra sibirica*, Argali *Ovis ammon* (NT), Mongolian Gazelle *Procapra gutturosa* and Siberian Marmot *Marmota sibirica* (EN).



Photo: Sch.Boldbaatar