

IBA CODE: MN021

IBA NAME: TELMEN LAKE

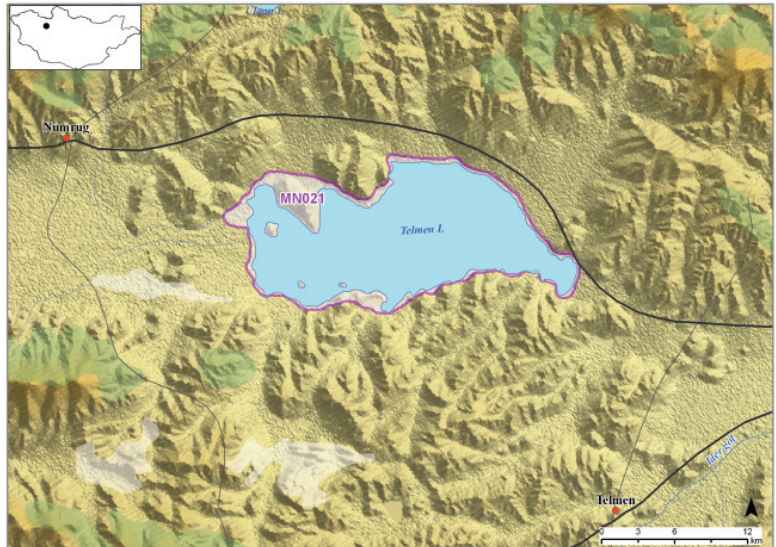
Aimag(s): ZAVKHAN **Criteria:** A1, A3, A4i **Area:** 24,175 ha
Coordinates: 48°56'N 99°21'E **Altitude:** 1,789-2,305 m

Protection status

Unprotected

Site description

Telmen Lake, located on the boundary between Numrug and Telmen soums, is a mineral lake of tectonic origin. The northern and southern shores are mountainous and have numerous peninsulas, while the eastern and western shores are relatively flat with salt marshes, sand dunes and three small islands where water birds gather in vast numbers. Nomadic animal husbandry is the primary land use in the area.



Importance for birds

Swan Goose *Anser cygnoides* (EN) breeds at the site, Saker Falcon *Falco cherrug* (EN) and Lesser Kestrel *F. naumanni* (VU) also occur there, while Siberian Crane *Grus leucogeranus* (CR) has been recorded on migration. The site supports an assemblage of species restricted to the Eurasian steppe and desert biome. The site regularly

supports at least 1% of the flyway population of Ruddy Shelduck *Tadorna ferruginea*.

Importance for other fauna and flora

No information is available about other fauna and flora.



Photo: B.Nyambayar