

IBA CODE: MN005

IBA NAME: KHOKH SERKHIIN NURUU STRICTLY PROTECTED AREA

Aimag(s): BAYAN-OLGII, KHOVD **Criteria:** A1, A2, A3 **Area:** 74,502 ha

Coordinates: 48°09'N 90°47'N **Altitude:** 2,100-3,775 m

Protection status

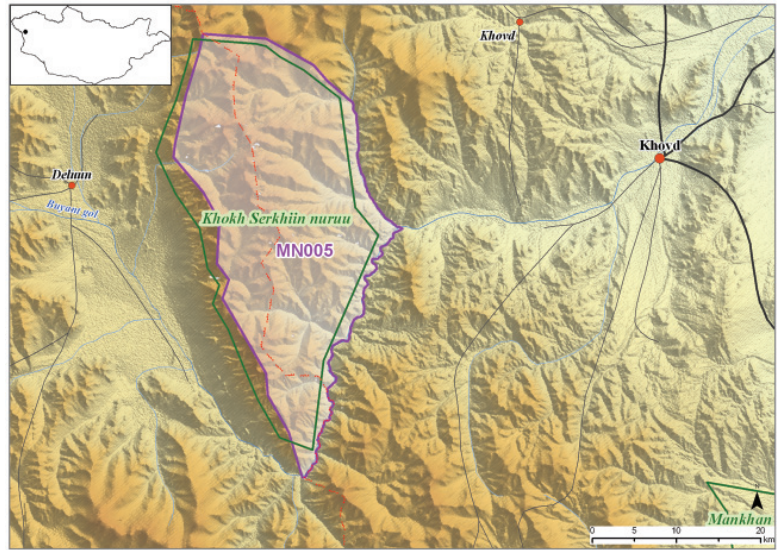
Fully protected by Khokh Serkhiin Nuruu Strictly Protected Area

Site description

The site comprises an area of high, snow-capped mountains, located in the centre of the Mongol Altai mountain range, on the border between Khovd and Bayan-Olgii aimags. The mountainous area is barren and rocky, and forest patches are found in some areas.

Importance for birds

Globally Threatened and Near Threatened species occurring at the site include Saker Falcon *Falco cherrug* (EN), Cinereous Vulture *Aegypius monachus* (NT), White-throated Bushchat *Saxicola insignis* (VU) and Yellow-breasted Bunting *Emberiza aureola* (VU). The bird community at the site is a good example of the Eurasian high montane biome, and biome-restricted species there include Altai Snowcock *Tetraogallus altaicus*, Chukar Partridge *Alectoris chukar*, Alpine Accentor *Prunella collaris*, Brown Accentor *P. fulvescens*, White-winged Redstart *Phoenicurus erythrogaster* and White-winged Snowfinch *Montifringilla nivalis*. Large raptors, such as Golden Eagle *Aquila chrysaetos*, Steppe Eagle *A. nipalensis*, Gyps *himalayensis*, Cinereous Vulture and Lammergeier *Gypaetus barbatus*, are common and nest at the site. The site supports Mongolian Accentor *Prunella koslowi*, the restricted-range species whose breeding range defines the Mongolian Mountains Secondary Area.



Importance for other fauna and flora

Many Globally Threatened and *Red Data Book of Mongolia* species occur at the site, including Snow Leopard *Uncia uncia* (EN), Siberian Ibex *Capra sibirica*, Argali *Ovis ammon* (NT), Red Deer *Cervus elaphus*, Eurasian Lynx *Lynx lynx*, Pallas's Cat *Felis manul*, Stone Marten *Martes foina* and Siberian Marmot *Marmota sibirica* (EN). Large herds of Siberian Ibex and Argali can be seen, which is a rare sight.

Other information

Poaching and habitat fragmentation are the main threats to the wildlife of the site. Trophy hunters often visit this area. There is no regulation about the locations of trophy hunters' camp sites. Herders' camps are also common, and cause disturbance to mountain ungulates. As a result, Snow Leopard and Grey Wolf face a shortage of food and attack livestock, giving rise to conflict between park rangers and herders.



Photo: N. Tseveenmyadag